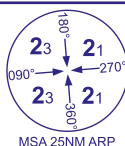
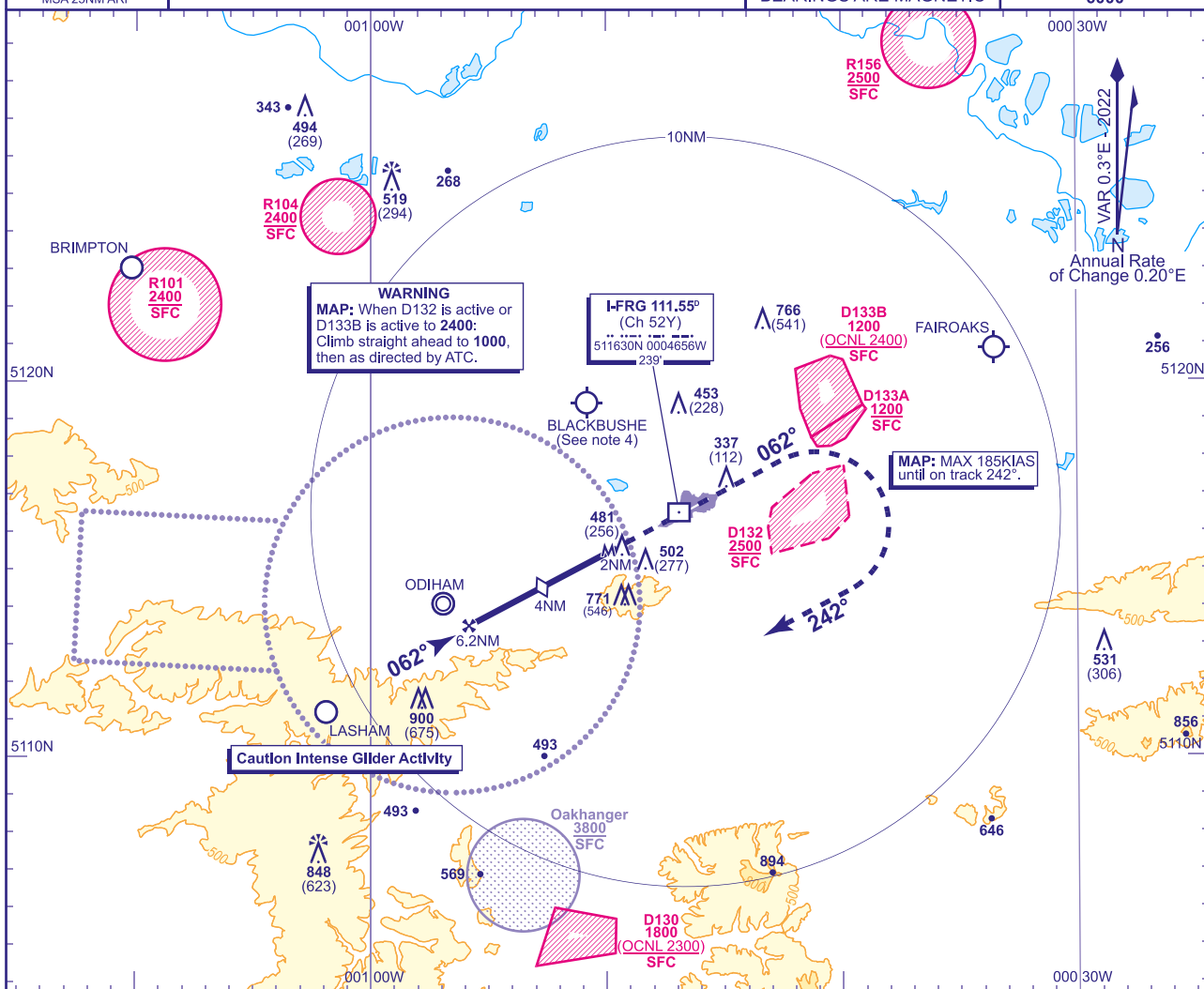


**FARNBOROUGH**  
**SRA RTR 2NM**  
**RWY 06**  
(ACFT CAT A,B,C,D)



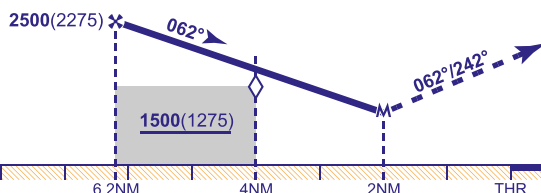
APP	134.355	125.250	FARNBOROUGH RADAR	AD ELEVATION	238
TWR	122.780		FARNBOROUGH TOWER	THR ELEVATION	225
RAD	130.055		FARNBOROUGH DIRECTOR	OBSTACLE ELEVATION	
ATIS	128.405		FARNBOROUGH INFORMATION	900 AMSL (675) (ABOVE THR)	
				BEARINGS ARE MAGNETIC	

TRANSITION ALTITUDE  
6000



RADAR ADVISORY HEIGHTS Gradient 6.1%, 372FT/NM

<b>NM</b>	6.2	5.0	4.0 (SDF)	3.0
<b>ALT(HGT)</b>	<b>2500(2275)</b>	<b>2080(1855)</b>	<b>1710(1485)</b>	<b>1340(1115)</b>



MAPt RTR 2NM

Continuous climb to **3000**. Initially straight ahead to **1400**, then right onto track 242°, then as directed by ATC.

Aircraft Category		A	B	C	D	Rate of descent	G/S KT	160	140	120	100	80
OCA (OCH)	Procedure	1020(795)	1020(795)	1020(795)	1020(795)		FT/MIN	990	870	740	620	500
VM(C)OCA (OCH AAL)	South of RWY 06/24	1020(782)	1020(782)	1170(932)	1170(932)							

**NOTE**

- 1 MSA are based on obstacle/terrain clearance. Pilots are to ensure safe navigation to remain clear of active Danger Areas.
- 2 SUAAIS available on Farnborough Radar 133.440 when open; other times London Information on 124.600.
- 3 CAT B,C and D no circling when EGD132 is active. CAT C and D no circling when EGD133A and EGD133B are active.
- 4 Pilots are reminded of the close proximity of Blackbushe aerodrome, 3.8NM north west of Farnborough and to remain clear due to intense GA activity.
- 5 See Loss of Communication Procedures in EGLF AD 2.22 Flight Procedures.
- 6 Radar Advisory Heights are to Touchdown.

**CHANGE (8/24):** DME I-FRG COORDINATES CORRECTED.

AERO INFO DATE 10 MAY 24

AD 2-EGLF-8-3